



State Department
for Blue Economy
and Fisheries



THE WORLD BANK
IBRD • IDA | WORLD BANK GROUP

Kenya Marine Fisheries and Socio-economic Development (KEMFSED)

KEMFSED Community Project Grants



Data point:



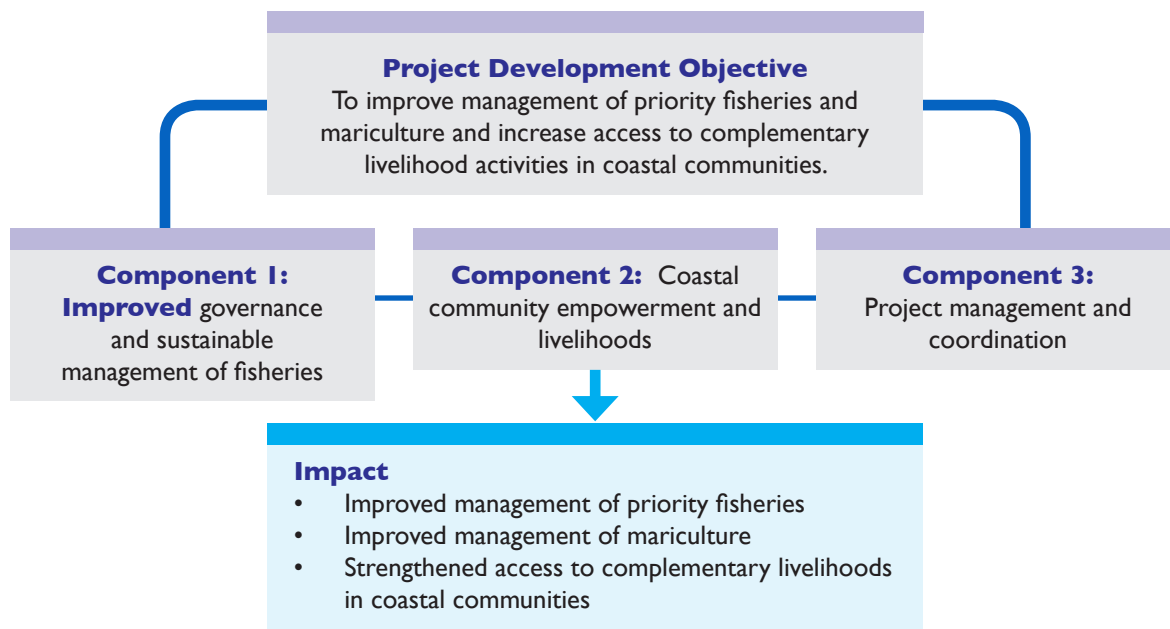
Sh.800Million +
distributed to **600 groups** in **5 Counties**,
19 Sub-Counties and **98 Wards**

About KEMFSED Project

The Kenya Marine Fisheries and Socio-Economic Development (KEMFSED) project is implemented by Government of Kenya, through the State Department for Blue Economy and Fisheries with support from the World Bank. The supports the country in its efforts to leverage emerging opportunities in the Blue Economy. The project duration is 2020-2025 with funding worth KSH10 billion.

The project 98 Administrative Wards in 19 Sub-Counties in five coastal counties: Kilifi, Mombasa, Kwale, Tana River and Lamu.

Project Objectives



Over Sh800 million awarded to community groups

A key component of the project is the Enhanced Coastal Community Livelihoods (ECCL) initiative through which awards are given for community-sub-projects that complement fisheries. This ensures diversified and sustainable incomes for households. By August 2023, a total of Ksh886 million had been awarded to over 600 community groups. Additionally, over 300 scholarships have been awarded to students in high school and colleges to enhance local capacities.

Grants awarded (August 2022)

County	No. Groups	Amount Ksh
Kilifi	135	289,401,978
Mombasa	195	190,797,521
Kwale	135	213,711,036
Tana River	87	57,637,308
Lamu	61	112,934,333
Total	613	864,482,332



H.E. President William Ruto presents a cheque for groups in Mombasa County

How KEMFSED Community Grants Work

The KEMFSED project gives awards grants to common interest groups (CIGs) such as self-help groups, women's groups, youth groups and community-based groups.

The grants are in three categories:

- *Productive livelihood* grants for income-generating activities to increase household incomes (including enhancing fisheries, livestock and crop farming).
- *Natural capital* grants to conserve the environment (including mangrove/coral restoration)
- *Social welfare* grants to improve social facilities.

The grants are awarded in a process led by the County Project Implementation Unit (CPIU) and County Project Steering Committee (CPSC) that includes representatives of the national government.

1: Participatory Integrated Community Development process

The entire community is involved in a process to determine their development needs and make Community Development Plans that outline the priority interventions for each ward. The PICDs indicate the type of community projects that the project can fund.

2. Development of concept papers

Common interest groups (CIGs) submit project concept notes. CPIU reviews the concepts and approves those that can be developed into proposals

3. Submission of proposals

Selected groups develop and submit proposals with the assistance of field officers

4. Screening of proposals at county level

Field officers review project proposals by CIGs and submit them for further appraisal by county-level technical teams

5. Review by national project team

CPIU submits project appraisal report to National Project Coordination Unit (NPCU) and feedback to CIGs.

6. Award of grant

Memorandum of Understanding Agreement/Implementation Agreement signed between the project CIGs

7. Capacity building, monitoring and reporting

Grantees to implement projects through training, monitoring and reporting.



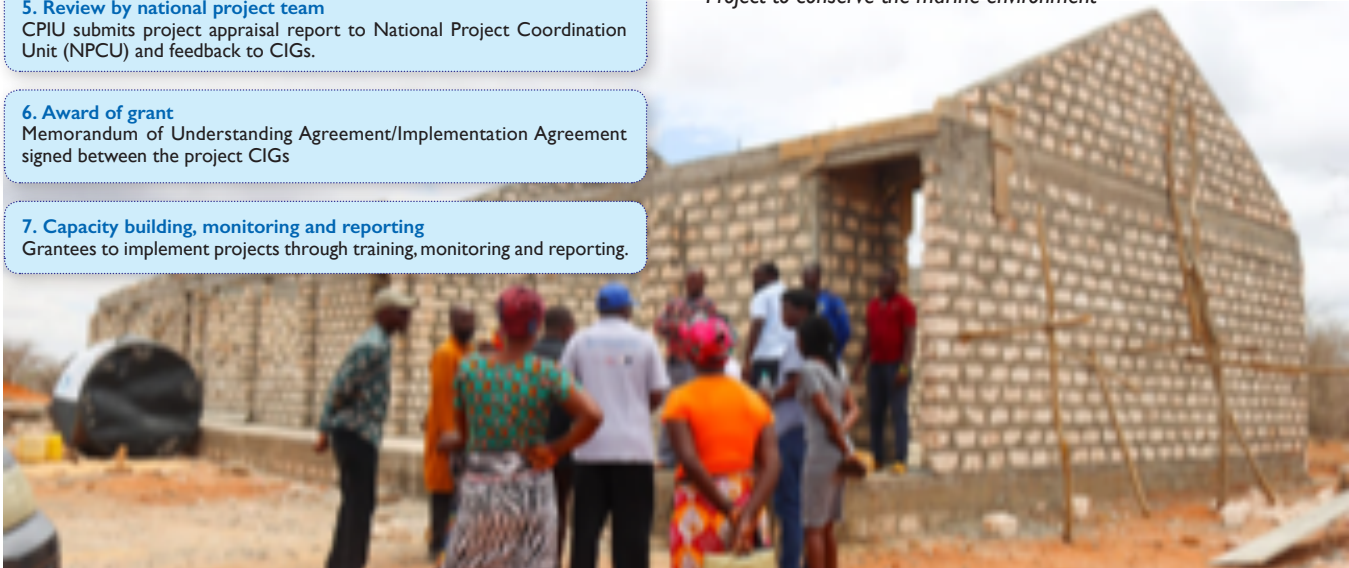
Purchase of boats and gear for deep-sea fishing



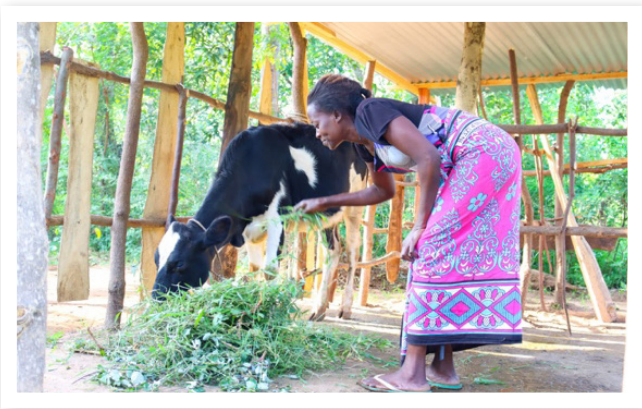
Mariculture projects for income



Project to conserve the marine environment



Social welfare projects include construction of classrooms



Livestock and crop farming to complement fisheries



Beekeeping to diversify incomes



Mangrove forest restorations projects



Borehole and solar technology for irrigation



Equipment and tools for environmental clean-ups



Synergy between conservation and mariculture production

Contacts

Head Office: Maktaba Kuu, Ngong Road,
Upper Hill, Nairobi
Email: info@kemfsed.org
Tel: +2540207860430

Satellite Office: Kenya Fisheries Service
Taib Bin Nasir Road, Liwatoni, Ganjoni Area, Mombasa
Email: info@kemfsed.org
Tel: 041 2222222